



## Are you buying technology that you already own?

If you purchase a conventional UPS system, you're paying again for technology that's already included in your downstream IT equipment.

Take time to learn more.

# Lite-On Understands Power

For decades we've built power supplies for the world's most trusted brands; chances are the power supply in your server, computer, or even your mobile-device charger was built by us. It's through our expertise in power that we've developed the VPOC™ (Virtual Power On Call) system.

## The VPOC™ System

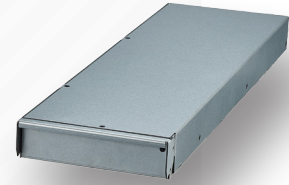
VPOC™ is an innovative back-up power solution that uses a fraction of the space and cost of conventional Uninterruptible Power Systems. Its highly-efficient 10kW VPOC™ Power Module and field-replaceable Li-ion battery modules easily slide into the 1U VPOC™ Power Shelf to complete this innovative backup power system. The VPOC™ automatically manages transition between normal (AC) operation and battery-backup mode (DC) while providing valuable system information through its front panel and communication interfaces.



The small, but powerful, 10kW VPOC™ Power Module offers up to 99% efficiency in single-phase AC or DC operation. When in maintenance-bypass mode, the VPOC™ Power Module can be exchanged in seconds without interrupting connected IT equipment due to its modular, tool-less design.

# Lithium-Ion Battery Modules

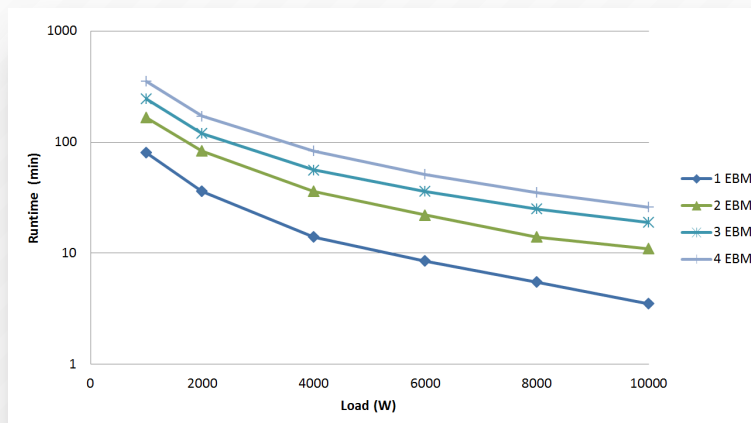
The VPOC™ Li-ion Battery Module is an integral component to the VPOC™ system and provides up to 2.5 minutes of run-time at 5kW. The VPOC™ Shelf supports up to two VPOC™ Li-ion Battery Modules which together can provide 2.5 minutes of run-time at 10kW. The VPOC™ system manages user-defined algorithms to support charging parameters for the Li-ion Battery Modules.



# Extended Battery Modules

As an alternative option to Li-ion battery modules, the VPOC™ system can be configured with one to four VRLA Extended Battery Modules (EBMs).

This configuration supports runtimes from 3.5 to 26 minutes at 10kW. The EBMs are temperature-monitored and recharged by the VPOC™ system.



# Power Distribution Units

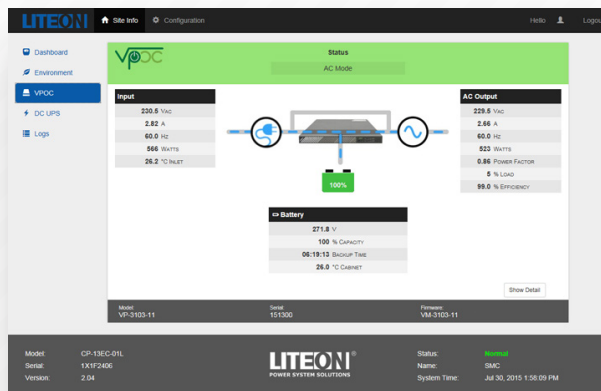
The ability to supply backup DC power to critical IT equipment is the key behind the VPOC™ system. Power from VPOC™ is distributed downstream through overload-protected Lite-On PDUs that support either AC or DC voltage depending on the state of utility power.



# Site Management Controller

VPOC™ can connect to the Lite-On Site Management Controller (SMC) through its CAN bus which allows

advanced remote control and monitoring of the VPOC™ system through an intuitive web interface. The SMC connects to the Internet allowing the VPOC™ to be accessed remotely from any location.



## EIA 19-inch Racks

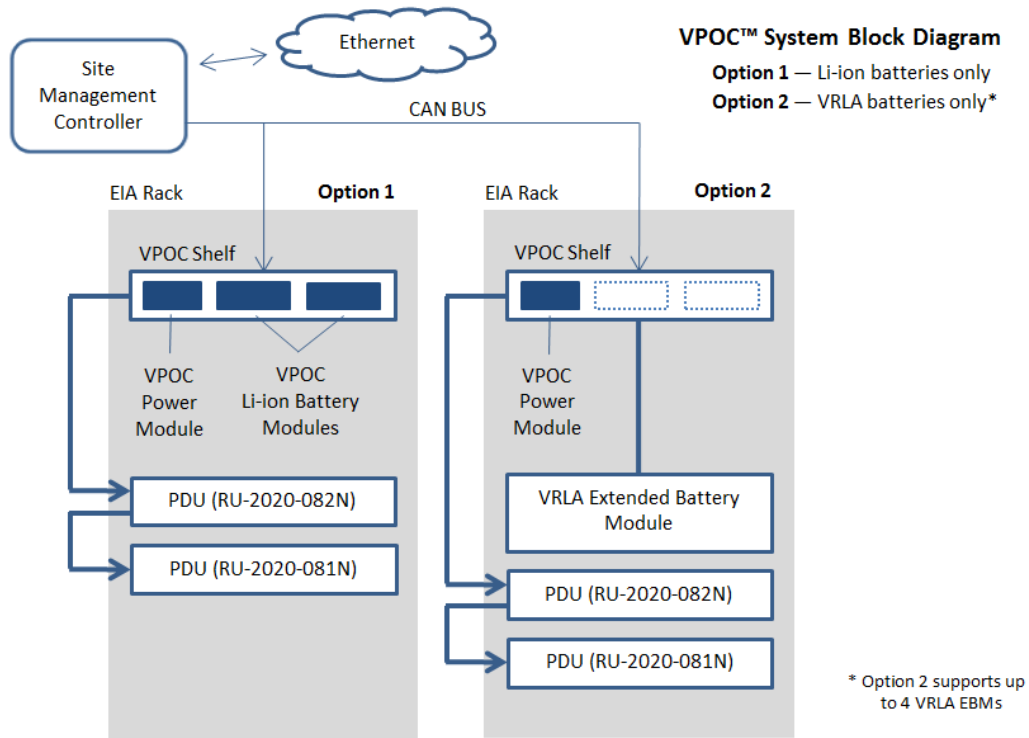
All VPOC™ equipment can be mounted in a standard EIA 19-inch rack. Lite-On offers versatile equipment racks that fit a variety of IT and datacenter applications.



# VPOC™ System Components

The VPOC™ system provides a comprehensive power management and battery backup capability based on multiple building blocks with configuration flexibility to suit specific power, size, and run-time requirements. The table below provides additional information on the different building blocks available to create a customized power solution. Please visit our website for more in-depth information or contact your local Lite-On PSS representative for support.

Component	Model Number	Description
VPOC™ Shelf	VP-3103-111U	1U VPOC™ Power Shelf with 3 slots: <ul style="list-style-type: none"> <li>• VPOC™ Power Module slot (1)</li> <li>• VPOC™ Li-ion Battery Module slots (2)</li> </ul>
VPOC™ Power Module	VM-3101-111U	10kW Power Module
VPOC™ PDU	RU-2020-082N	1U or 0U Cabinet PDU with 20A fuse and IEC320-C13 receptacles (6) plus IEC320-C19 receptacles (2)
	RU-2020-081N	1U or 0U expansion PDU with 20A fuse and IEC320-C13 receptacles (6) plus IEC320-C19 receptacles (2)
VPOC™ Li-ion Battery Module	BM-1502-010U	2.5 minute run-time at 5kW (2 battery units provide 2.5 minutes at 10kW)
VRLA Extended Battery Module	BK-1151-010U	3U EBM equipped with VRLA batteries for 3.5 minutes run-time at 10kW
Site Management Controller	CP-13EC-010U	Rack management and control
19" Rack	KT-1942-10-1	19-inch EIA rack





Innovative Power Management Solutions for Critical Infrastructure

**Lite-On Power System Solutions USA**

3001 Summit Avenue, Suite 400, Plano, TX 75074

phone: +1 (469) 331-9838

email: [pss.sales@liteon.com](mailto:pss.sales@liteon.com)

[www.liteon-pss.com](http://www.liteon-pss.com)

**Lite-On Power System Solutions Taiwan**

No. 90, Chien 1 Rd., Chung Ho Dist, New Taipei City 23585

phone: +886 -2-2226181 ext 5026

email: [pss.sales@liteon.com](mailto:pss.sales@liteon.com)

[www.liteon-pss.com](http://www.liteon-pss.com)