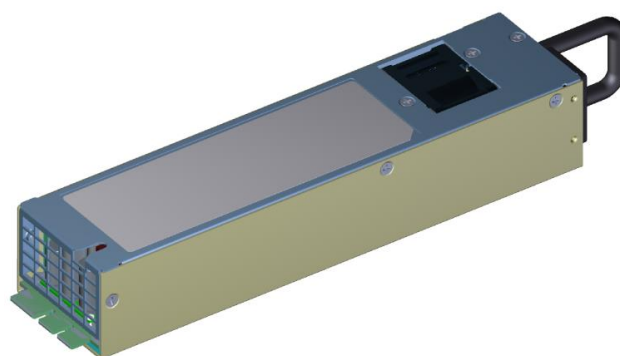
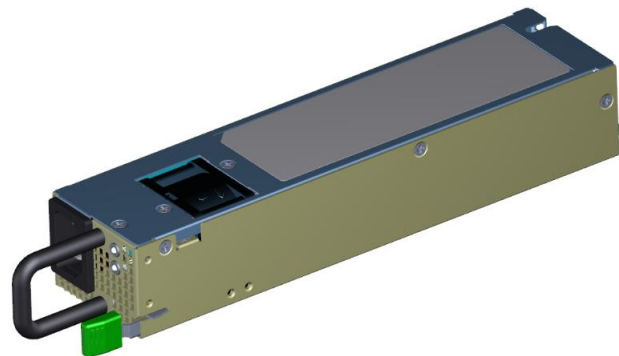


LITEON Server Power Supply 850W, 54.5mm

Features:


- 80 PLUS® Platinum
- Holdup Time: $\geq 10\text{ms}$
- AC Input Range 100Vac ~ 240Vac; DC Input 240Vdc
- Output Voltage 12 Vdc; + 5VSB
- N+N (N=2 max) Redundant power supply with Hot plug, current sharing & remote sensing
- Self-cooling with fan speed control
- One Bi-color LED indicators
- PMBus Compliant 1.2
- Protections include OCP, OVP, UVP, OTP and Brownout
- 850W is in 54.5mm (W) x40.6mm (H) x 220mm (L)
- Altitude: 5,000 meters
- Operating Temperature: 0°C ~ 50°C
- Compliance EMC IEC/EN 61000
- EMI Class A, -6dB margin
- Safety Certificates: IEC/EN 60950-1, IEC/EN62368-1 and UL/CSA62368-1 2nd Ed




Electrical Specifications:

Parameter	Description	Parameter	Description
Input voltage	AC input 200Vac ~ 240Vac $\pm 10\%$ AC input 100Vac ~ 127Vac $\pm 10\%$ DC input 164Vdc ~ 300Vdc	Main Output Voltage (12VDC)	12.0Vdc $\pm 5\%$
		SB Output Voltage (SB)	5.0Vdc $\pm 5\%$
iTHD	100% Load < 5% 50% load < 8% 20% load < 10% 10% load < 20%	12VDC Current Rating	70.83A @ 200Vac~240Vac or 240Vdc 55A @ 100Vac~127Vac
Power Factor (PF)	> 0.99 @ 100% load /230Vac > 0.98 @ 50% load /230Vac > 0.96 @ 20% load /230Vac > 0.90 @ 10% load /230Vac	Capacitive Load	12.0Vdc: 2,200uF ~ 22,000uF 5.0Vdc: 100uF ~ 1,000uF
		SB Current Rating	4A
Efficiency	94% Peak at 50% Load, 230Vac, 80 PLUS® Platinum	Output Power	850W@200Vac~240Vac or 240Vdc 680W@100Vac~127Vac
Redundant	N+N (N=2 max) Redundant	Hold Up Time	10mS

LITEON Server Power Supply 850W, 54.5mm

 PROTECTION			
Parameter	Description	Parameter	Description
12VDC OCP	Current is above 81A for 350ms (Latch mode)	SB OCP	Current is above 4.8A to 6.8A (Hiccup mode)
12VDC OVP	Voltage is above 13.5V~14.5V (Latch Mode)		
12VDC UVP	Voltage is below 10V ~ 11V (Latch Mode)	SB OVP	Voltage is above 6.0V~8.5V (Hiccup mode)
Input Brownout	Voltage is below 79Vac or 144Vdc (Auto recovery mode)	Over Temperature	Ambient Temperature (Auto recovery mode)
Input Brown-in	Voltage is above 87Vac or 160Vdc	Input OVP	Voltage is above 310Vac (Auto recovery mode)

 Control Signal / Indicate Signal / LED			
Parameter	Description	Parameter	Description
PS_ON	Input signal PS_ON = LOW to turn on 12VDC	PMBus	Version 1.2 I2C interface with 400KHz
		ALERT	Output signal ALERT = LOW to indicate WARNING event (Event Programmable)
POK	Output signal POK = High to indicate the 12VDC existence	LED (Output use)	Green Flashing --> Standby mode
			Green Solid --> 12VDC active mode
Amber Flashing --> Warning event			
VIN_GOOD	Output signal VIN_GOOD = High to indicate Input existence		Amber Solid --> Fault protection
A0/A1	To set PSU address (Support 4 units address)	LED (Input use)	Green Solid --> Input Voltage OK
			No Light --> Input Voltage Not OK
			Green Flashing --> Input Voltage OVP or UVP

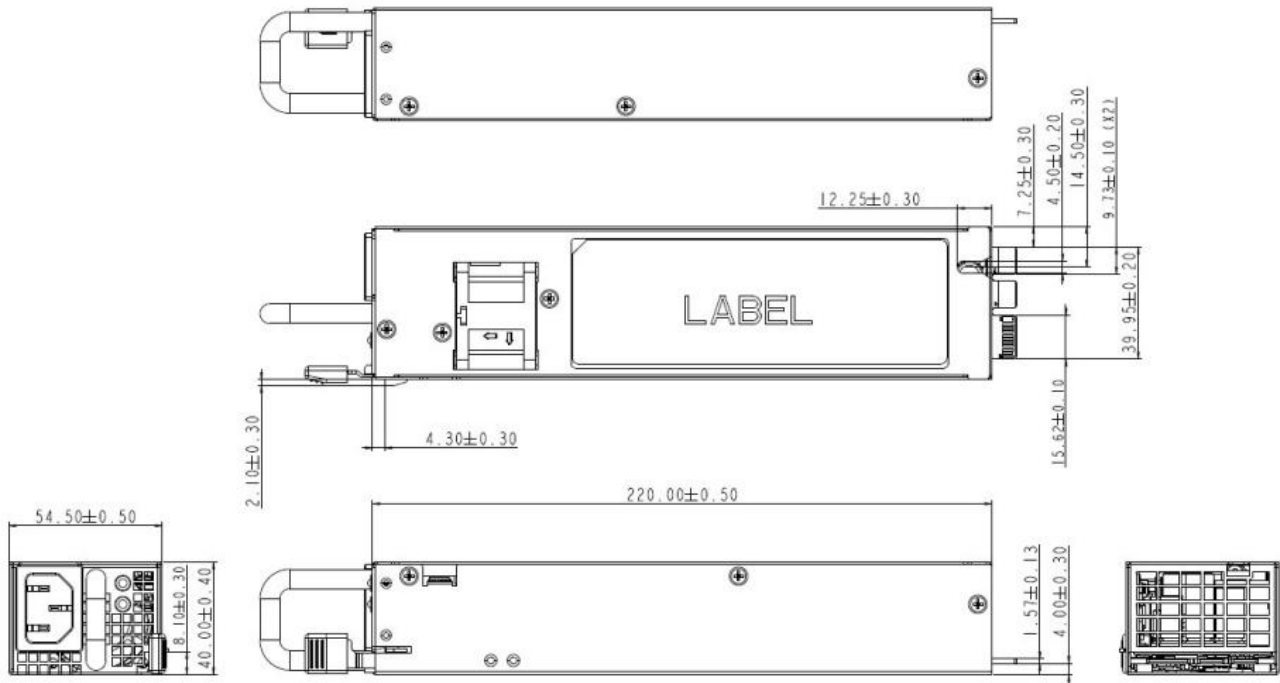
LITEON Server Power Supply 850W, 54.5mm

ENVIRONMENT / RELIABILITY			
Parameter	Description	Parameter	Description
Operation Temp.	0°C ~ 50°C	MTBF	200K hours at rated load, 50°C amb. temp., 230Vac
Operating Humidity	5% ~ 85%	ECAP Life	5 years at rated load, 50°C amb. temp., 230Vac
Storage Temp.	-40°C ~ 85°C	Air Flow	Normal Mode, From DC to AC
Storage Humidity	5% ~ 95%	Fan Life	43,800 hours at 100% load, 50°C amb. temp.
Altitude	5000 meters		

Safety Approvals IEC/EN 60950-1, IEC/EN62368-1 and UL/CSA62368-1 2nd Ed.		
Insulation safety rating	Input / Output	Reinforce
	Input / Case	Basic
	Output / Case	Functional
Hi-pot strength	Input / Output	2121 Vdc/1min
	Input / Case	2121 Vdc/1min
Touch Current	0.875mA (single unit)	
EMC Requirements		
Radiated Emissions CISPR 22/ EN55022/ FCC Part 15	Class A / -6dB	
Conducted Emissions CISPR 22/ EN55022/ FCC Part 15	Class A / -6dB	
EN61000-3-2 Harmonics (AC Rated Input Current <=16A per phase)	Class A	
IEC61000-4-2 ESD	8kV Contact / 15kV Air	
IEC61000-4-3 Radiated Immunity	10V/m, Criteria A	
IEC61000-4-4 EFT (5kHz and 100kHz repetition rates)	0.5KV, Performance Criteria A. 2KV, Performance Criteria B.	
EC61000-4-5 Surge	±2.0 kV CM, ±2.0 kV DM, Criteria A	
IEC61000-4-6 Conducted Immunity	10Vrms, Performance Criteria A required.	
IEC61000-4-11 Voltage dips, short interruptions and voltage variations immunity tests	Requirements for Voltage Dips and Short Interruptions as specified in EN55024, CISPR 24, EN300386, and EN61000-6-1.	

LITEON Server Power Supply 850W, 54.5mm

Dimension:



AC Inlet Socket		
Connector Type		SK0105012431212.5, HCR ELECTRONICS CO., LTD
Drawing		
Output Gold Fingers and Pin Assignment		
Pin No.	Name	Remark
P1~P2	12VDC	12VDC Output
P3~P4	PGND	Power Ground

LITEON Server Power Supply 850W, 54.5mm

S1	RS+	+12VDC remote sense+
S2	RS-	+12VDC remote sense-
S3	LSB	Load Sharing Bus
S4	-Alert	PSU fail warning
S5	SDA	PMBUS data
S6	SCL	PMBUS clock
S7	PS_KILL	Not Used
S8	-PS_ON	Power Supply unit on/off control signal
S9	POK	+12VDC Output OK
S10	PS_A1	PSU address Setting A1
S11	+5VSB	+5Vsb output
S12	+5VSB	+5Vsb output
S13	NC	NC
S14	-PS_PRESENT	Power Supply unit Present Indicator
S15	PS_A0	PSU address Setting A0
S16	NC	NC
S17	NC	NC
S18	ASP	Not Used
S19	VIN_GOOD	Vin status indicator
S20	CR	Not Used
S21	NC	NC
S22	NC	NC
S23	+5VSB	+5Vsb output
S24	+5VSB	+5Vsb output

PIN ASSIGNMENT

